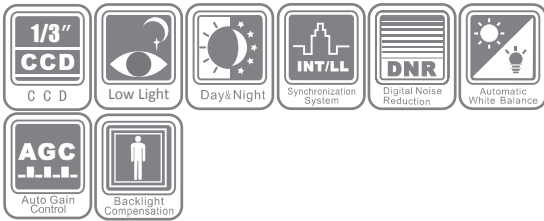
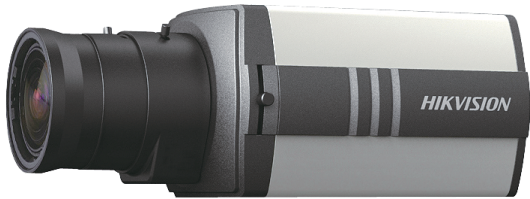


DS-2CC1112/1172P(-A) Box Camera



Key Features

- 1/3" Sony Super HAD CCD II
- Low illumination
- Digital wide dynamic range
- Digital noise reduction
- Day / night auto switch

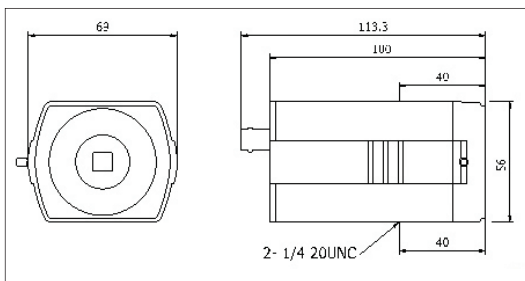
Specifications

	DS-2CC1112P(-A)	DS-2CC1172P(-A)
Camera		
Image sensor	1/3" Sony Super HAD CCD II	
Signal system	PAL	
Effective pixels	752 (H) × 582 (V)	
Min. illumination	0.1 lux@F1.2, AGC on	
Shutter time	1/50s ~ 1/100,000s	
Lens mount	C/CS mount	
Auto iris	DC/Video drive	
Day & night	Electronic	
Horizontal resolution	480 TVL	540 TVL
Synchronization	Internal synchronization (-A series support Internal / Power synchronization)	
Video output	1Vp-p composite output (75 Ω / BNC)	
S/N ratio	More than 52dB	
General		
Operating conditions	-10°C ~ 60°C (14°F ~ 140°F) Humidity 90% or less (non-condensing)	
Power supply	12 VDC ± 10% (-A series support 24 VAC ± 10%, 12 VDC ± 10%)	
Power consumption	2W max. (-A series: 3W max.)	
Dimensions	69 x 56 x 113.3 mm (2.72" x 2.20" x 4.46")	
Weight	400g (0.88 lbs)	

Available models

DS-2CC1112P, DS-2CC1112P-A, DS-2CC1172P, DS-2CC1172P-A

Dimensions



Accessories

